



## Region 8 Ordinary Meeting

### AGENDA

**Location:** Clare Country Club  
White Hut Road, Clare, South Australia  
**Time/date:** Friday 12 July 2019 1.30pm  
**Zoom:** <https://zoom.us/j/981243846>

1. **ATTENDANCE**
  - 1.1 Present:
  - 1.2 Apologies:
2. **WELCOME**
  - 2.1 Chair - Mayor Denis Clark, Northern Areas Council
3. **DECLARATION OF INTERESTS**
4. **MINUTES**

Minutes of the previous [meeting](#)
5. **CEO's REPORT**
  - 5.1 CEO's reports [online](#)
  - 5.2 MDA Board Meeting 387 [Minutes](#)
6. **GENERAL BUSINESS**
  - 6.1 Regional priorities in water – water security and economic development.
  - 6.2 MDA National Conference 2021 - bid for hosting rights
  - 6.3 Region 8 Region Executive Committee
  - 6.4 Motions for MDA National Conference 2019
7. **PRESENTATION**
  - 6.1 **Dept for Environment and Water** | Jarrod Eaton - Manager, Water Resource Operations
  - 6.2 **MDA Strategic Advisory Group** | Mayor Brenton Lewis, SA Representative
7. **SCHEDULE OF MEETINGS**
8. **CLOSE**

*The Murray Darling Association acknowledges and thanks Legatas SA for its support in hosting this meeting of Region 8.*



# MEMBERSHIP BENEFITS

## LOCAL PRIORITIES - NATIONAL INFLUENCE



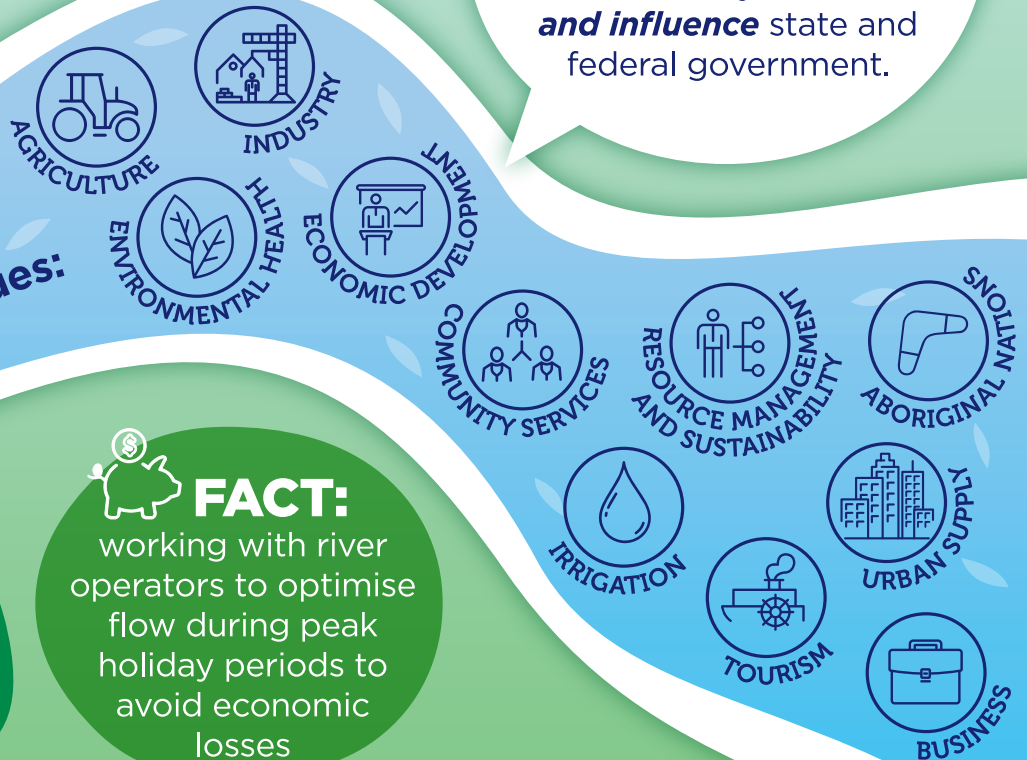
### FACT:

we helped kick-start the Snowy scheme over 70 years ago!

The benefits of MDA membership are now flowing freely to all our regions.

The MDA is your peak body for local government in the management of Basin water resources, working harmoniously to **inform and influence** state and federal government.

Water plays a unique role in so many important local issues:



### FACT:

today's Basin Plan is world-leading watersharing legislation. Council influence is more important than ever!



### FACT:

working with river operators to optimise flow during peak holiday periods to avoid economic losses

Here's why your council has so much influence, as an MDA member:



**regions meet quarterly** to establish your priorities

**chairs meet monthly** to understand and support your priorities at a Basin scale

**annual** national conference

**multi-level** information sharing.



### FACT:

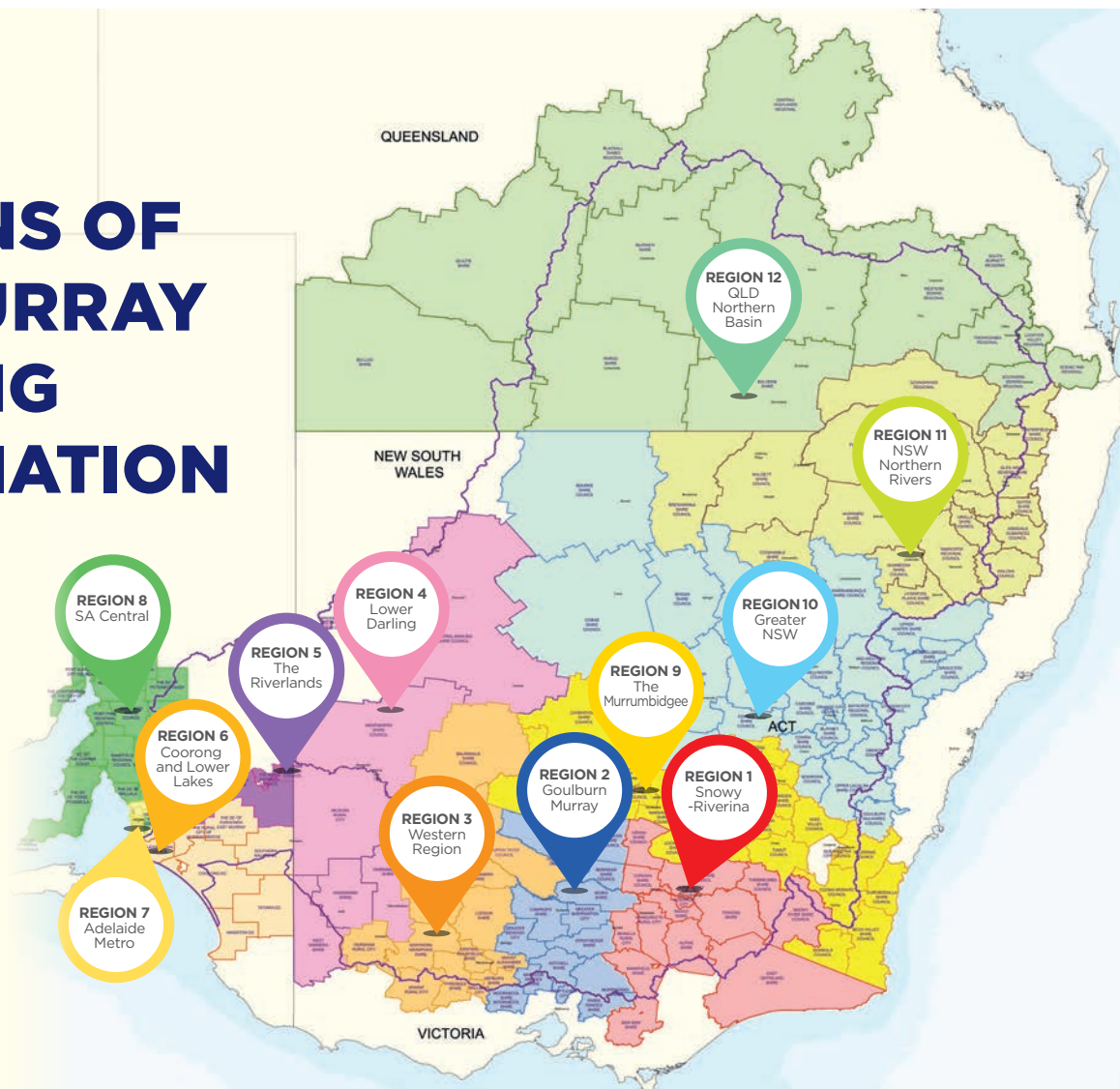
partnering the National Carp Control Plan to engage councils about a better approach to feral fish management. Results so far are exciting!

Local government united – to **inform and influence**.  
Ensure your council's membership!

[www.mda.asn.au](http://www.mda.asn.au) / [admin@mda.asn.au](mailto:admin@mda.asn.au)



# REGIONS OF THE MURRAY DARLING ASSOCIATION



## A COMPLEX ENVIRONMENT

We recognise there are:

172 councils, and their associated communities

4 states, the ACT, and the Commonwealth, and countless agencies

Two houses of parliament, a government, an opposition, minor parties and cross benchers

across the Murray Darling Basin.

All have differing needs and demands.

Yet, all are united by our common commitment to a healthy working Basin.



For further information, please contact the Murray Darling Association  
P: (03) 5480 3805 | [www.mda.asn.au](http://www.mda.asn.au) | [admin@mda.asn.au](mailto:admin@mda.asn.au)



# MDA MEMBERSHIP FAQs

**Q. What's in it for my council?**

- regional & national representation of local priorities
- strong regional networks supporting local economic development and leadership initiatives
- effective representation of local government and your communities at state and federal level in the management of Basin resources.

**Q. Do the objectives of the MDA align with the mission and purpose of *my* council?**

***If your council is committed to***

- work closely with the Federal and State governments to achieve our goals
- be resilient to a changing climate and able to sustain our urban and rural productivity and quality of life, both now and for future generations
- foster partnerships that deliver value for money to our ratepayers
- responsibly manage our natural and build resources
- contribute to solutions for water quality and security in our local reign and across the Basin

***Then there is a strong strategic alignment between your council and the MDA.***

**Q. Will membership with the MDA 'water down' the ability of our council to engage directly?**

**Not at all. In fact, quite the reverse.** The MDA actively encourages our member councils individually and collectively to engage and contribute to the national debate and to participate in the decision-making process.

**Q. What are the relationship benefits?**

**The MDA has strong relationships with federal and state water Ministers, Basin Official, MP's, departments and agencies including**

- Federal Departments of Water, Agriculture and Environment
- State and Federal MPs and departments
- National, state and regional LGAs
- The Murray-Darling Basin Authority
- The Commonwealth Environmental Water Office
- CSIRO
- The Productivity Commission
- Universities
- Research and Development Corporations
- RDA's and more...



# MDA MEMBERSHIP FAQs

**Q. What is the MDA's position on the 450GL up-water?**

The MDA supports the Murray-Darling Basin Plan and recognises the need for it to adapt and evolve.

- Basin Plan implementation must deliver balanced social, environmental and economic outcomes for all
- we work constructively with all stakeholders using our collective knowledge and influence to develop solutions.

**Q. What has the MDA done for its members lately?**

- member of Productivity Commission (PC) Murray-Darling Basin Plan: Five-Year Assessment Stakeholder Working Group
- launched PC Draft Report at MDA 2018 national conference
- member of National Carp Control Plan Communications and Operations working group
- initiated Ministerial Round Table - Mildura, March 2017
- engaged MINCO regional meet and greet events
- instrumental in Local Government Representatives on the Basin Community Committee
- facilitated interagency meeting on the health of the Barwon Darling
- regular engagement through Australian Local Government Association & State LGA events
- 10 years of MOU with Murray-Darling Basin Authority (2013-2023)
- attracted funding for LG projects & initiatives
- member of Murray-Darling Basin Peaks Group
- driven the Basin agenda via the MDA National Conference and AGM for 75 years
- Largest membership-based LGA of councils in Australia
- triggered review of social and economic impacts analysis (SIA) and definition of neutrality of the plan
- Connecting Catchments and Communities education and leadership forums
- MDA Basin Communities Leadership Program.

- all councils have differing needs and demands, yet we are united by our common commitment to a healthy working Basin
- our strength is in our diversity
- local solutions will deliver national unity on regional issues.

**Q. How can one organisation represent the interests of so many different councils ?**

**Member councils have a voice**

- in determining regional priorities
- by appointment to the National Conference and AGM
- through equitable voting entitlements that support the authority of local government, while enabling community members to contribute their expertise and experience.

**Q. What role does a member council have in the decision-making process?**

For further information, please contact the Murray Darling Association  
P: (03) 5480 3805 | [www.mda.asn.au](http://www.mda.asn.au)



# REGIONAL LEADERSHIP FAQs

**Q. Why should my council chair our region?**

**To contribute to a secure, sustainable water supply and a healthy Murray-Darling Basin**

- raise the profile and influence of your council, your region and the local government sector
- direct relationships with state and federal ministers, departments and agencies responsible for water management
- strong bonds with state, regional local government associations, and ALGA.

**Q. What is the role of a regional chair?**

**To provide regional leadership**

- serve on the national MDA board
- collaborate on opportunities for sustainability and economic development.

**Q. What does my council need to do?**

**To appoint delegates to the MDA, usually Mayor and CEO/GM**

- facilitate four region meetings a year
- attend monthly board meetings – digital, video and some face-to-face
- participate in CEO/GM network
- offer some secretariat support.

**Out-of-pocket costs vary from region-to-region, and may include**

- current membership
- meeting costs
- officer time
- some travel for regional representation.

**Q. How much will it cost?**

**Q. Other benefits in providing regional leadership?**

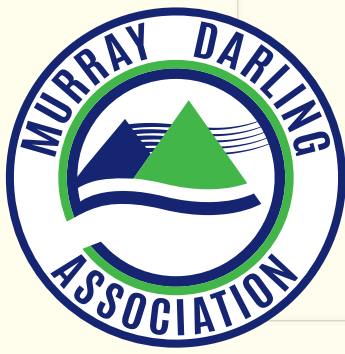
**To contribute local knowledge to state and federal decisions that impact your community**

- help form MDA strategic direction
- engage and collaborate with other regions
- support neutral/beneficial social and economic impacts on your community as water availability changes.

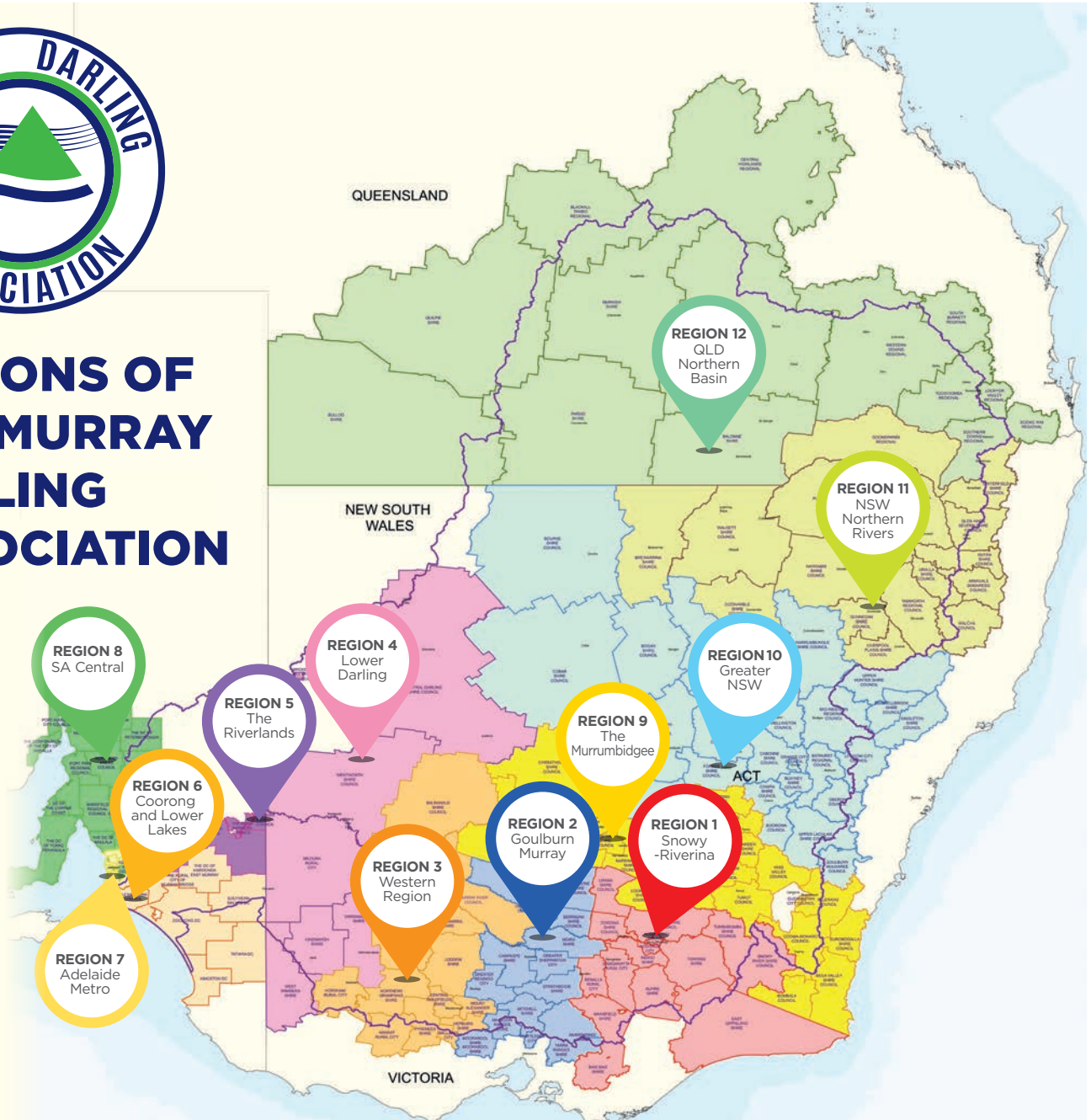
**Q. Our new councillor is very passionate about water – are they the most appropriate delegate?**

**The position of council is best represented by the Mayor and CEO/GM, particularly at national board and ministerial level.**

The regional chair is responsible for representing the position of council and its region, even if that position differs from personal views.



# REGIONS OF THE MURRAY DARLING ASSOCIATION



## A COMPLEX ENVIRONMENT

We recognise there are:

172 councils,  
and their  
associated  
communities

4 states,  
the ACT, and the  
Commonwealth, and  
countless agencies

Two houses of parliament,  
a government,  
an opposition,  
minor parties and  
cross benchers

across the Murray Darling Basin.

All have differing needs  
and demands.

Yet, all are united by our  
common commitment to  
a healthy working Basin.

For further information, please contact Emma Bradbury: [ceo@mda.asn.au](mailto:ceo@mda.asn.au)

# Why should your council join?



**A powerful voice.**  
Be part of a collective voice advocating for councils and communities in the Basin.



**Ensure your voice is heard.**  
Inform water policy at regional, state and federal level.



**Support existing alliances.**  
To advocate on regional priorities.



**Informed decision making.**  
Ensure your expertise and knowledge plays a part in the decisions affecting you.



**Shape the future.**  
Be a part of creating the future we want for our Basin communities.

# Murray Darling Association

Representing local government and community in the Murray-Darling Basin since 1944

**“If the MDA didn’t exist, we’d have to invent it.”**

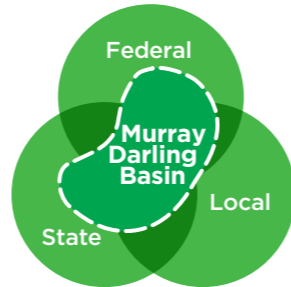
Hon Craig Knowles,  
Chairman Murray-Darling Basin Authority (2011-2015), Forbes 2014



Working together with **3 levels of Government** to deliver the Basin Plan.

MDA is the only peak body that provides a ‘parliament’ of local government on Basin related issues. MDA works with:

- Local Government NSW • Local Government SA • Local Government Qld
- Municipal Association of Victoria • Australian Local Government Association



## ? How can my council inform public policy?

Your council has direct influence.

- Regions meet quarterly.
- Region chairs meet monthly sharing knowledge for a whole of Basin perspective.
- Annual national conference.
- Peak representation at state and federal parliamentary and agency levels.
- 2-way information sharing.
- Secure council centric voting entitlements

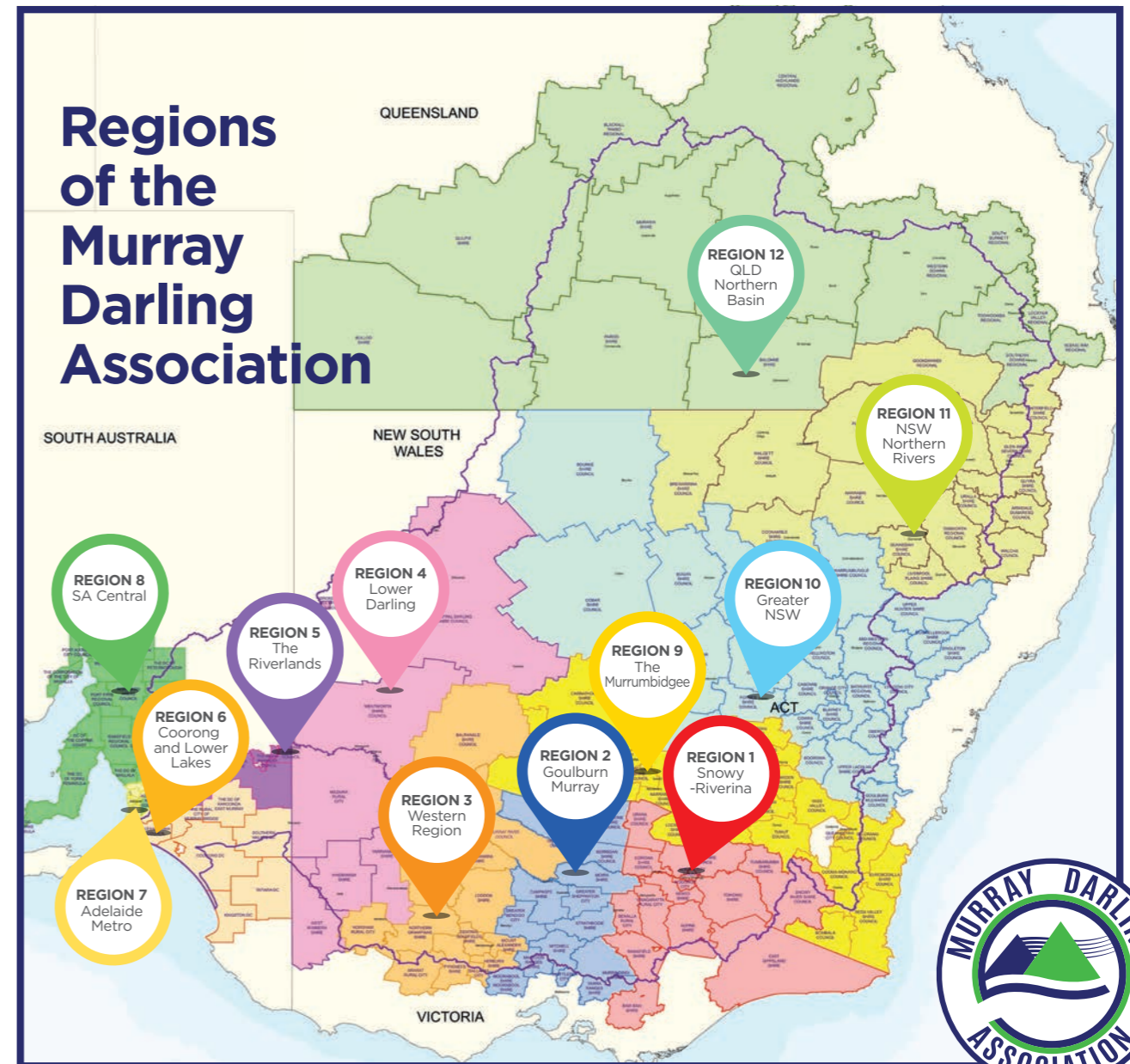
**Strength in numbers.** Peak body for local government across the Murray Darling Basin.



[www.mda.asn.au](http://www.mda.asn.au)

The MDA relies on the information provided by its member councils. Your council’s contribution is essential to ensure policy is developed in consultation with those most affected, providing valuable insights and perspectives before state and federal policy is irreversibly locked in.

## Regions of the Murray Darling Association





has a population of over **2 million** people

**14%** of the Australian continent

**167** councils across 4 states & the ACT

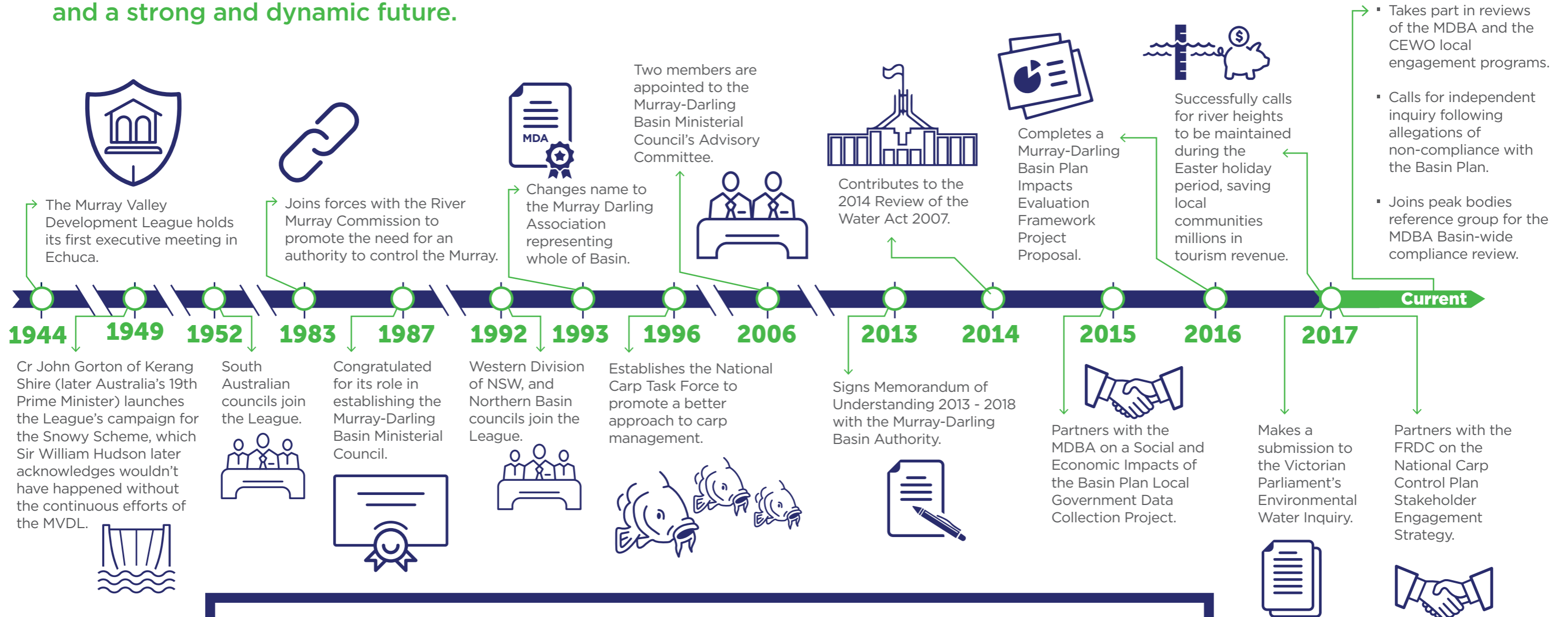
**3 million** people provides water to more than

**over 40** Aboriginal Nations



# The journey so far...

The MDA has a 73 year history of national achievements, and a strong and dynamic future.



**"History is made by those who show up."**

Benjamin Disraeli  
(British PM 1868-1880)



[www.mda.asn.au](http://www.mda.asn.au)

One voice representing local government and communities on water-related issues.

For more information, please contact:  
Level 1, 250 Anstruther St Echuca Vic 3564  
PO Box 1268 Echuca Vic 3564  
P: 03 5480 3805 E: [admin@mda.asn.au](mailto:admin@mda.asn.au)