



# Commonwealth Environmental Water Office HILTON TAYLOR



**Australian Government**

**Commonwealth Environmental Water Office**



 @theCEWH

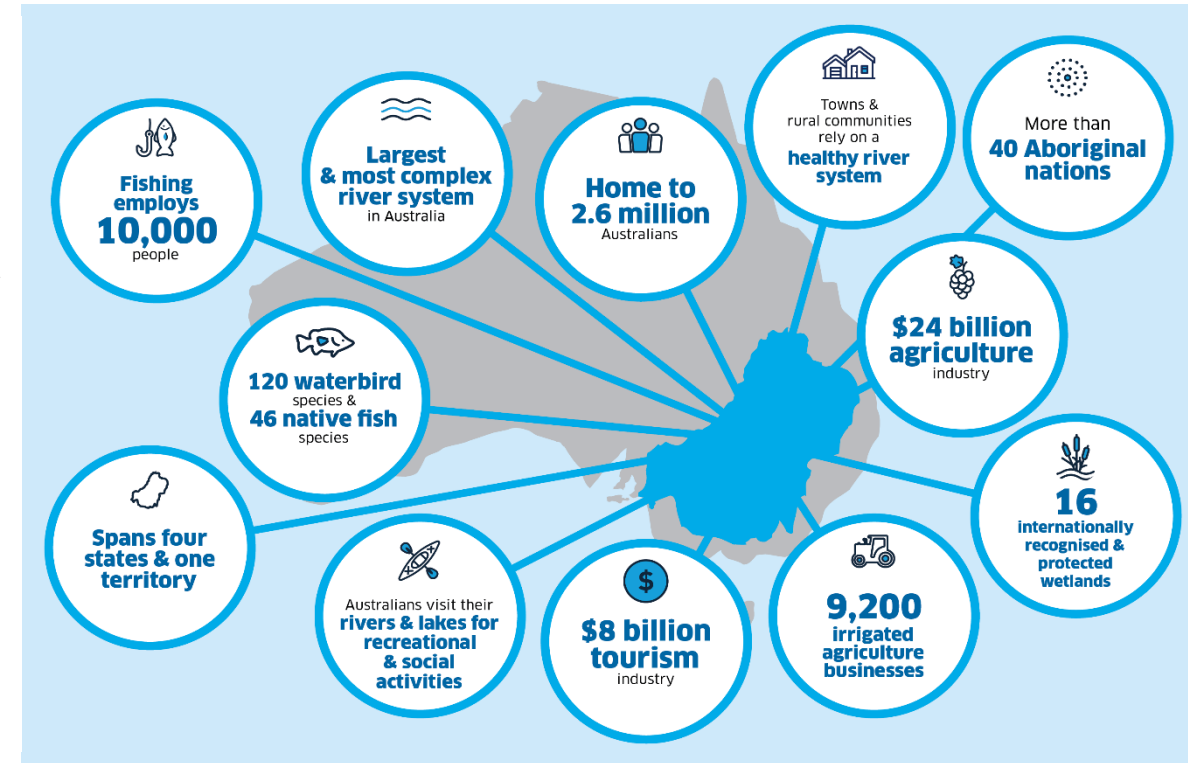
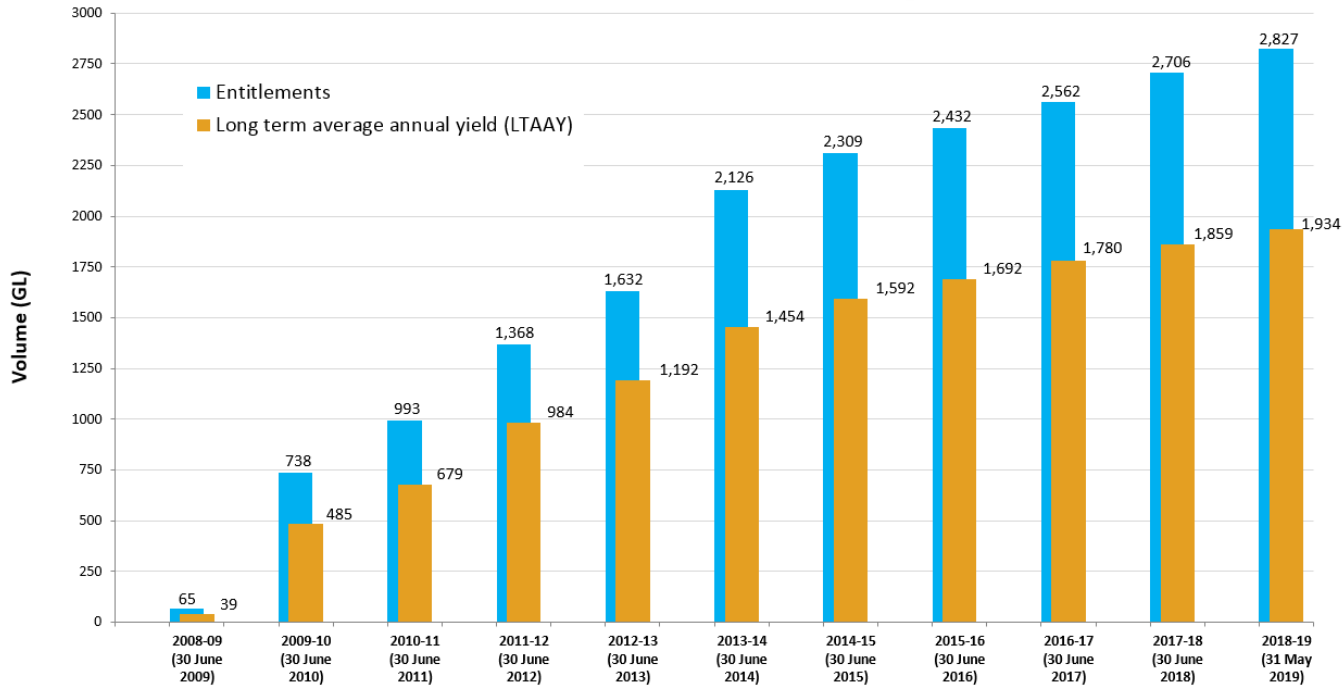
 flickr.com/photos/envirogov/sets

[environment.gov.au/water/cewo](http://environment.gov.au/water/cewo)



# Commonwealth Environmental Water Holder manages water to protect and restore the rivers, wetlands and floodplains of the Basin

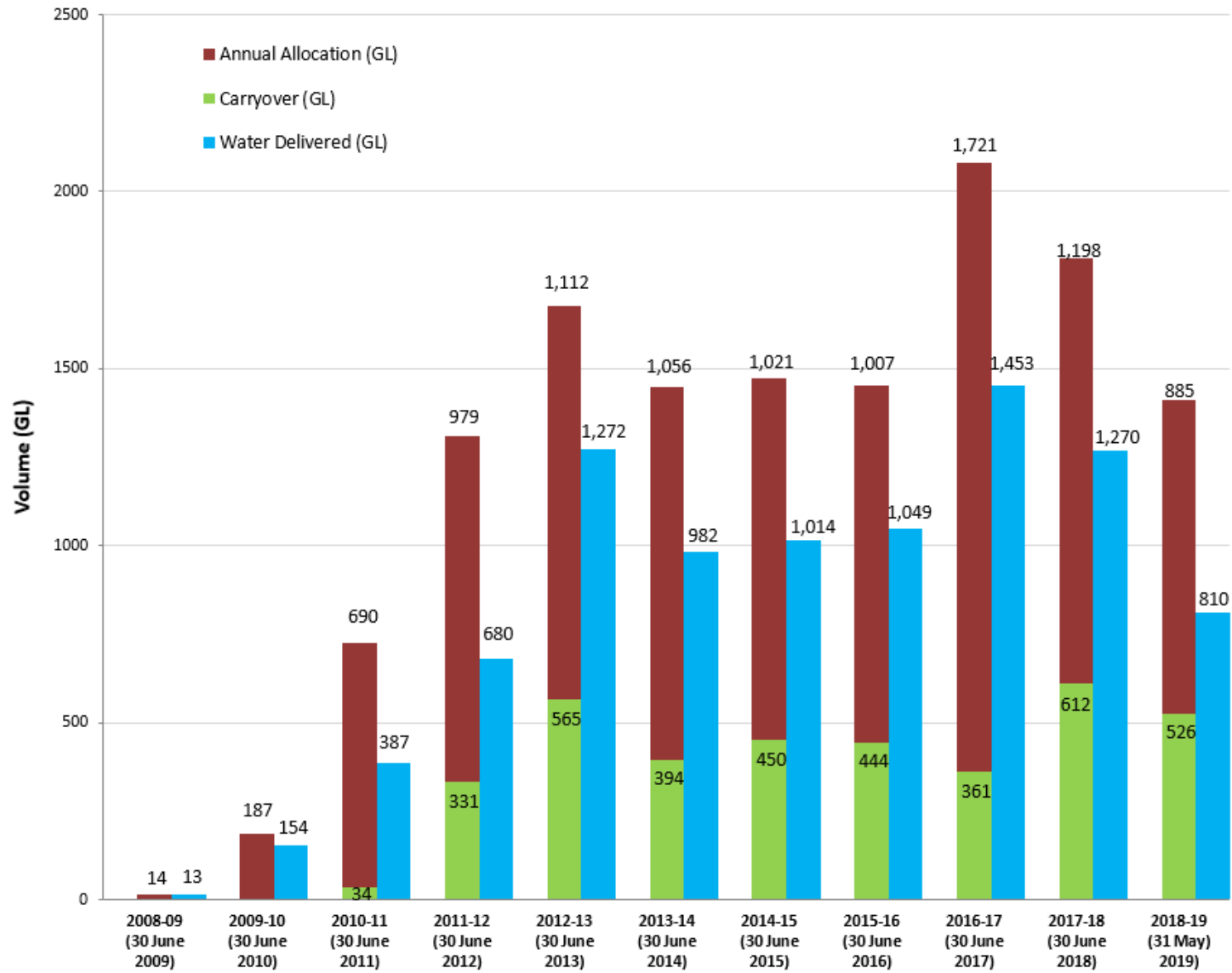
Commonwealth Environmental Water Holdings



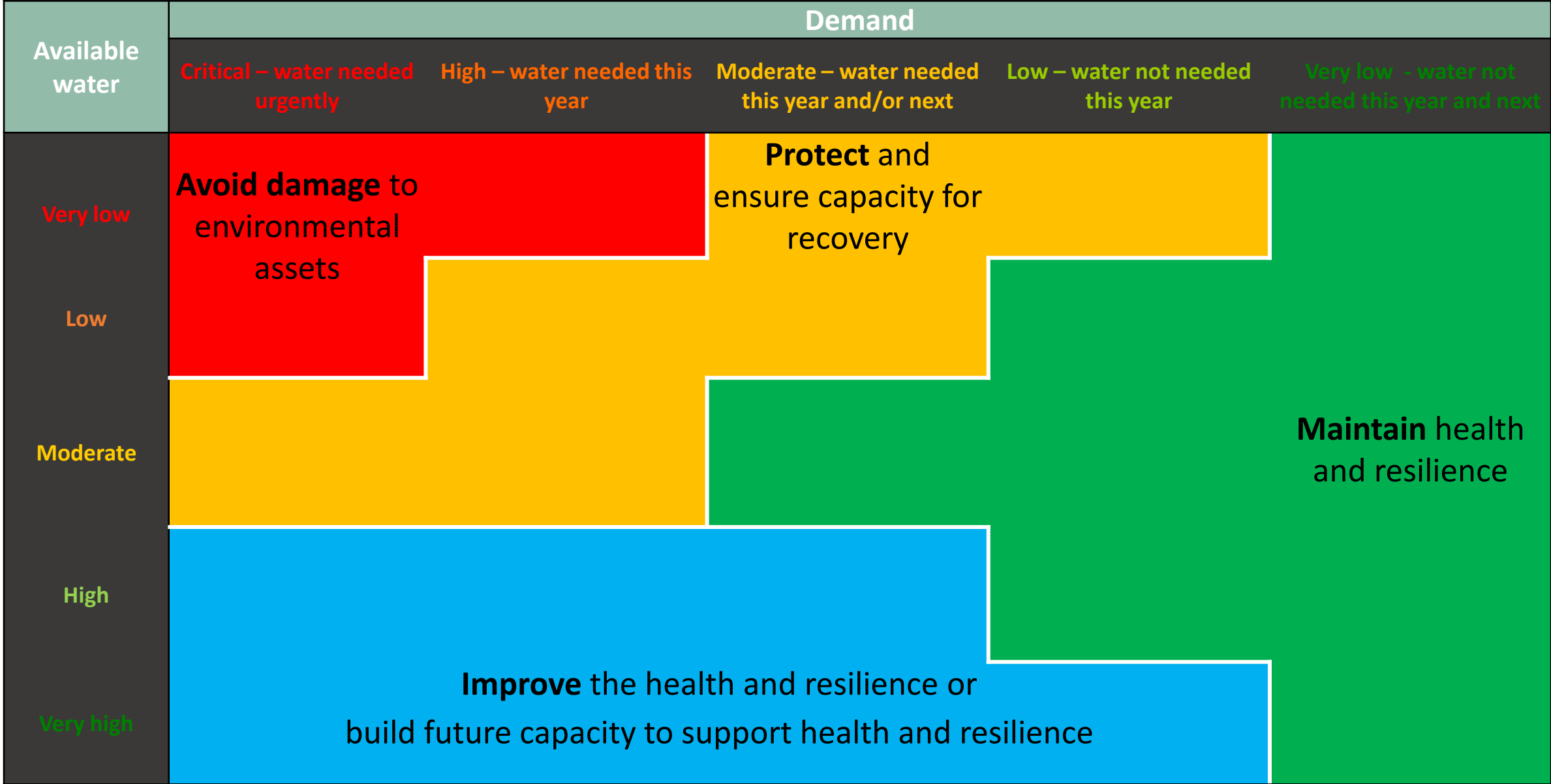
Value of Holdings	~\$3,340,000,000
Water used (since 2009)	9,082 GL



## Commonwealth Environmental Water Availability and Use



# How do we use our water?

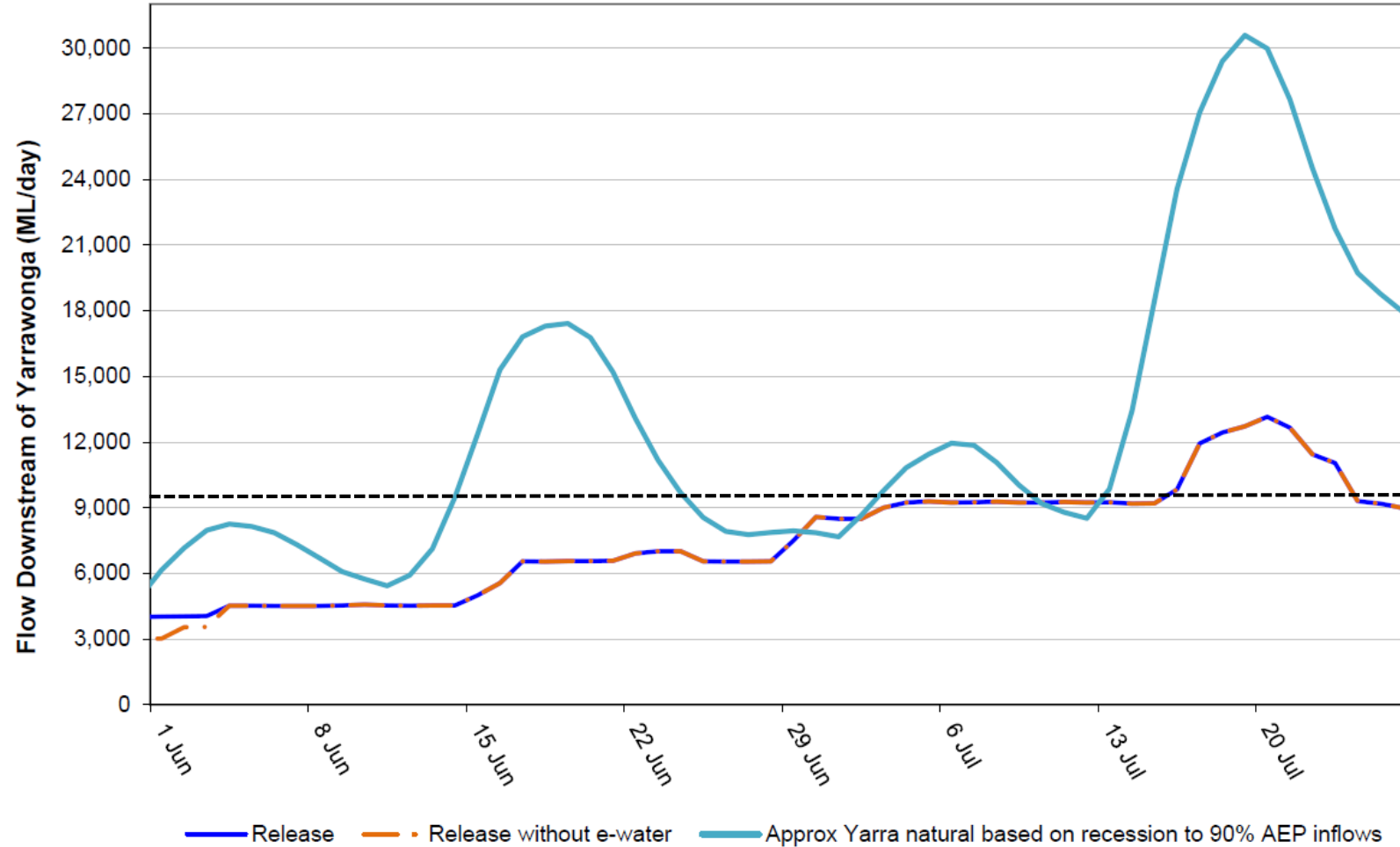




# Commonwealth Environmental Water – Triggers for Overbank Flows

## Environmental Flow Event : 2019-2020

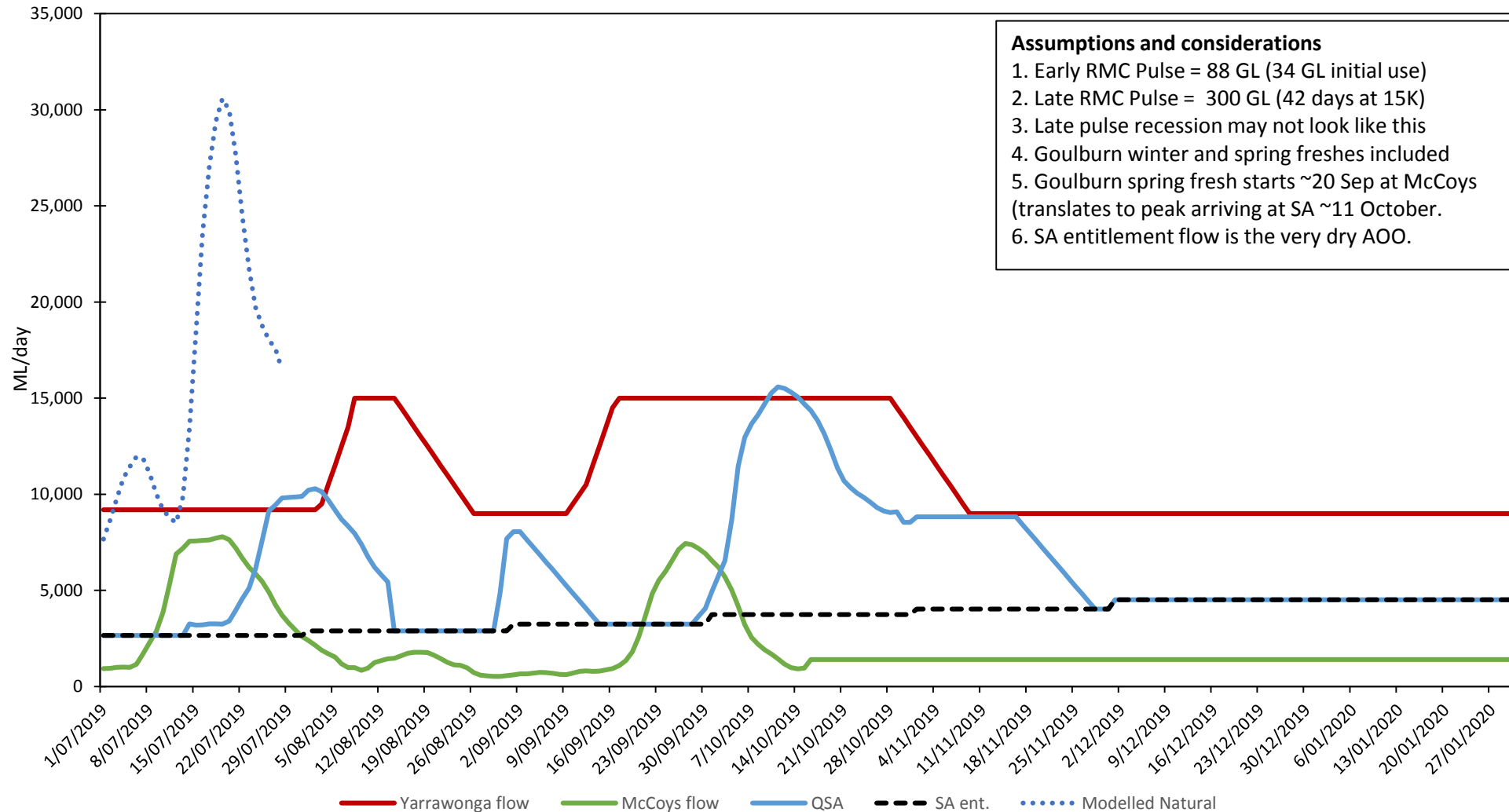
Flow downstream of Yarrowonga vs probable release without environmental release





# Commonwealth Environmental Water – Spring Pulse

Spring Pulse Planning hydrograph

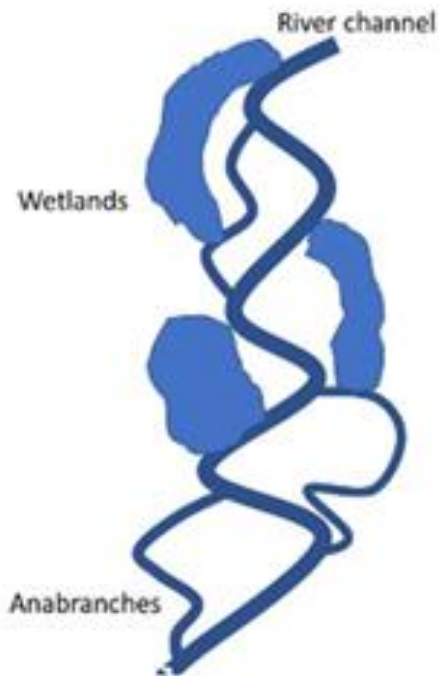




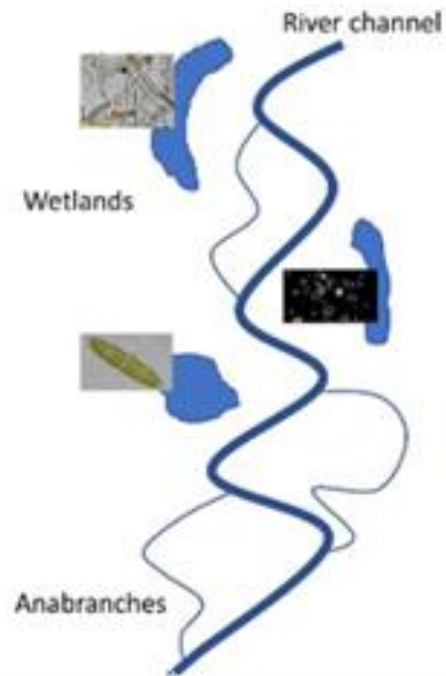
## Foodwebs and water management



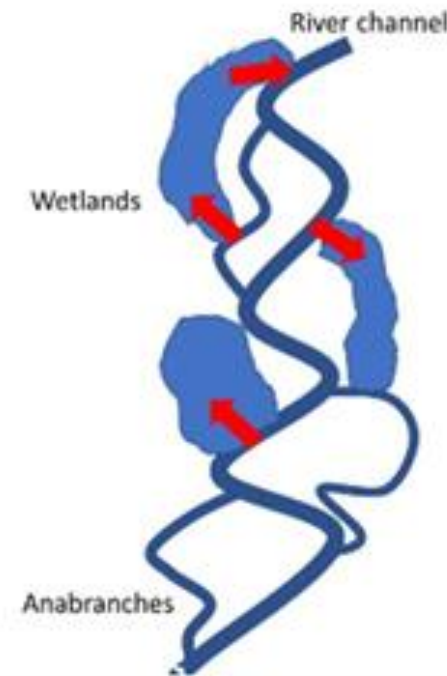
### 1. Initial flood pulse and floodplain connectivity



### 2. Disconnection



### 3. Reconnection



### Reconnection important to:

1. mobilise high quality food resources to the main channel
2. afford riverine consumers the opportunity to access high quality resources by moving onto the floodplain



# Questions?



## Connect with us

✉ [ewater@environment.gov.au](mailto:ewater@environment.gov.au)

🔗 [www.environment.gov.au/water/cewo](http://www.environment.gov.au/water/cewo)

☎ 1800 803 772

🐦 @theCEWH



Australian Government

Commonwealth Environmental Water Office



